

Is this a free clinic?

Services will be billed to the patient's insurance carrier. Patients who are uninsured may seek assistance from our staff for Medicaid enrollment. Sliding scale is offered to all patients.

What if my child needs an interpreter?

PCHS provides interpreting services free of charge. We can provide interpreting services for scheduled and same day appointments. This ensures that all of our patients have access to care no matter what language they may speak.



PENINSULA COMMUNITY HEALTH SERVICES

•••

SBHC MOUNTAIN VIEW MIDDLE SCHOOL-
2442 PERRY AVE NE BREMERTON WA, 98310
360-377-3776

•••

SBHC@PCHSWEB.ORG

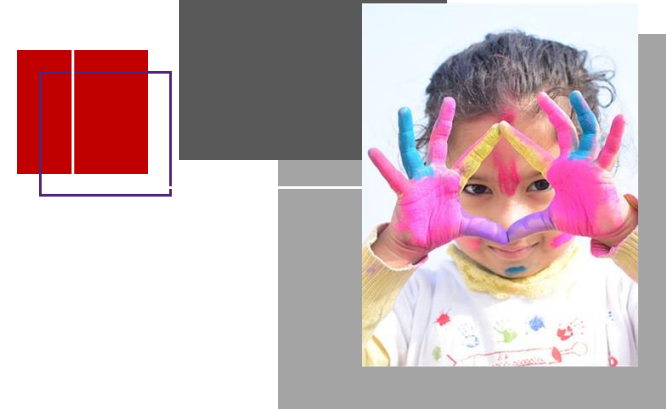
•••

WWW.PCHSWEB.ORG

#WEAREPCHS

*Proud member of the National School Based Health Alliance

*Partners of the Washington State School Based Health Center



**SCHOOL-BASED
HEALTH CLINIC
FAQ**

**Bremerton School District
MOUNTAIN VIEW MIDDLE SCHOOL**



What is a school-based health clinic?

A School based-health clinic, also known as SBHC, is a primary care provider clinic that is located in or on school grounds. The goal of SBHCs is to eliminate barriers for our community and students. With youth-focused health education and services available at school, more students are likely to stay healthy, feel supported, and to be in class ready to learn and graduate.

Is the clinic open to the public?

To ensure safety for the students and the staff, PCHS school-based health clinic will only be open to Bremerton School District students and staff at this time.

CLINIC HOURS

7:30 am – 4:00 pm

Monday – Friday

Medical appointments

Mondays, Tuesdays, Wednesdays, and Fridays. Thursdays late 2019/early 2020.

Behavioral Health appointments

based on availability. Once fully staffed, available 2-3 days per week



How do I make an appointment?

We offer **walk-in or scheduled appointments**. Appointments can be made any of the following ways:

- * Call our Patient services center at **360-377-3776**
- * Email requests for a visit or questions to **sbhc@pchswb.org**
- * Come in to the clinic to schedule
- * Students can request visits by putting slips in the Confidential Box at their school

Bremerton School District
is committed to the
...Whole Community
...Whole Child
...Whole School



What type of care can I receive at this clinic?

PCHS is excited to provide wraparound services at our local schools. We will have Primary Care Medical, Behavioral Health and Chemical Dependency Providers on staff.

