

KINDERGARTEN PROGRAMS

in Bremerton School District



Dual Immersion Program

The purpose of our Dual Immersion Programs is to prepare students for the future with abilities to listen, speak, read, and write both English and Spanish (Program option within the school).

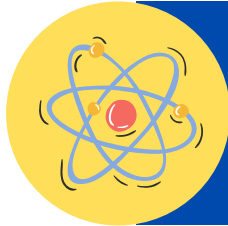
- Armin Jahr Elementary School



Arts Academy

Our Arts Integration Program, students master core content areas (reading, writing, math, science, and social studies) while concurrently learning arts standards (music, visual arts, drama, and dance). (Schoolwide)

- View Ridge Arts Academy



STEM Academy

The STEM Academy is committed to the exploration of science, technology, engineering, and math (STEM) to promote problem-solving through knowledge, innovation, and the ability to analyze, reason, and communicate ideas. (Schoolwide)

- West Hill STEM Academy



5 Houses, 1 Family

The house system is an idea adopted from Ron Clark Academy, students will be sorted into a "house" which creates a family-like culture, giving students the opportunity to grow relationships between grade-levels and with multiple staff members. (Schoolwide)

- Crownhill Elementary



Kindergarten Registration opens in February

For more information, visit

www.bremertonschools.org/kindergarten

or call 360-473-1077